

**SHELTON STATE
COMMUNITY COLLEGE**

presents

**HONORING
STUDENT
LEADERSHIP**

**MARTIN CAMPUS
RYAN DEGRAFFENRIED LECTURE HALL**

May 7, 2002

WELCOME

Susan Mohun,
Assistant Dean of
Student Services

RECOGNITION

Ambassadors

Deborah Bonner,
Advisor

The Shelton State Courier

Jim Kenny, Publisher

Phi Theta Kappa
International Honor Society

Tracy Branch
Advisor

Circle K

Debbie Grimes,
Advisor

Athletic Academic Achievement
Award

Susan Mohun

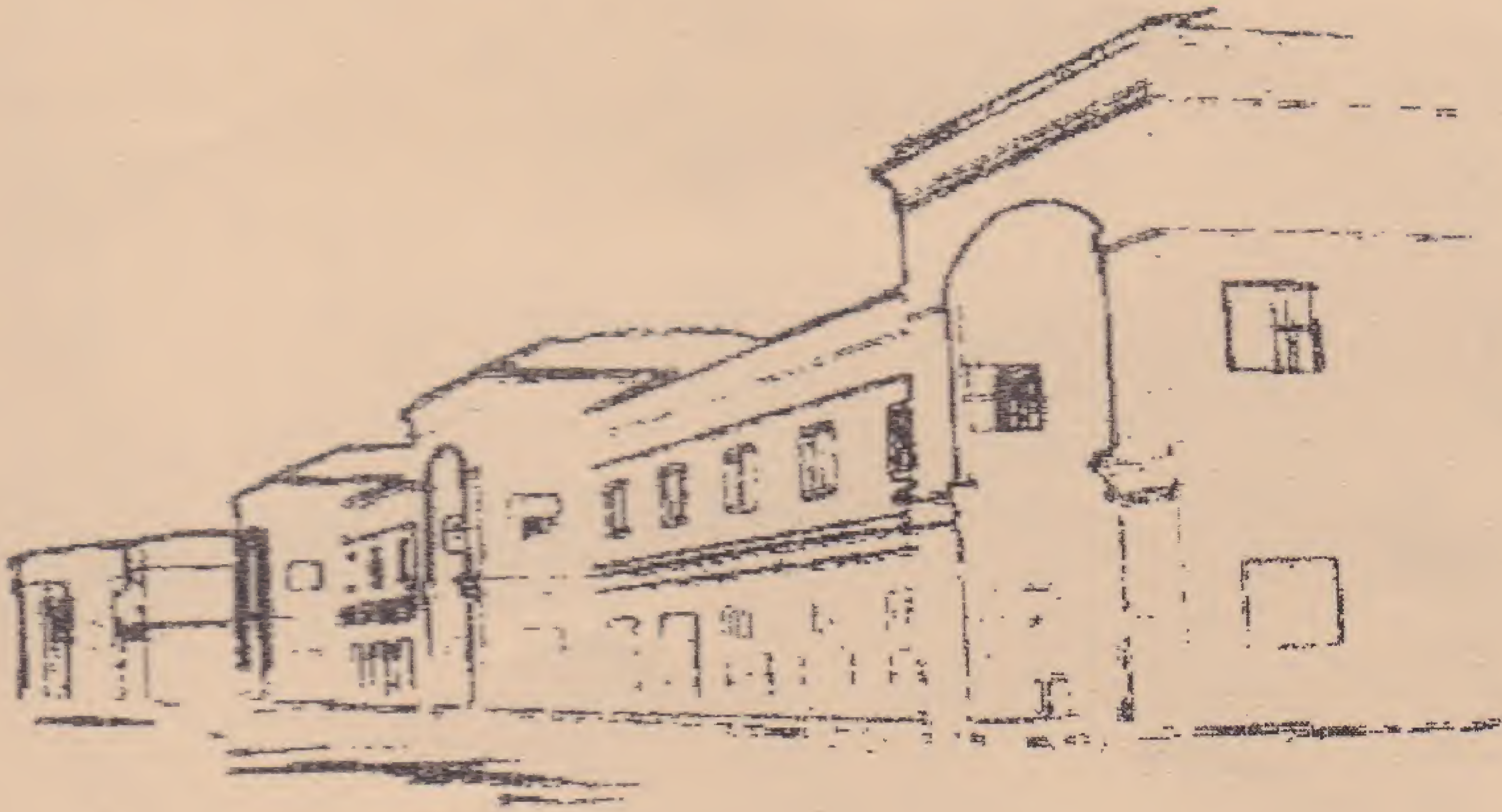
Music Awards

*Glinda Blackshear &
Mark Brown,*
Music Faculty

Association of Practical
Nursing Students

Kim Tuman Smith,
Advisor

Leadership Quote . . . *Life is like golf; no matter how m
own game.*



Shelton State Association
of Nursing Students

Jackie Williams,
Advisor

Who's Who

Susan Mohun

Harold I. James Award Finalists

Fran Turner

Leo Sumner Award Finalists

Fran Turner

Thomas E. Umphrey Award
Finalists

Fran Turner

ADJOURN

Susan Mohun

much instruction you get, eventually you have to play your